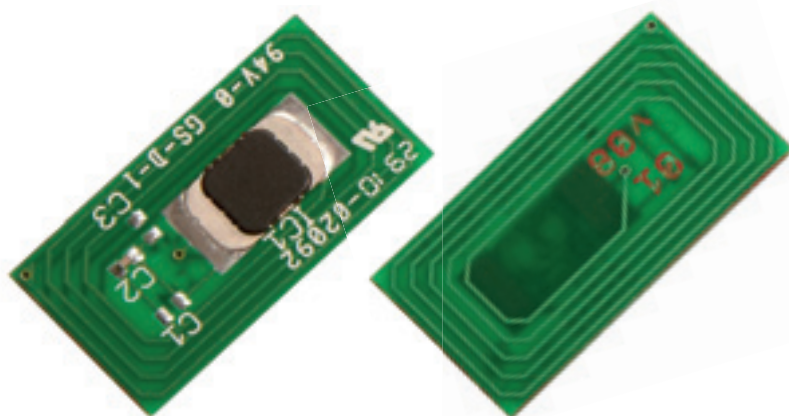


# PCB tags



LUX-IDENT's products

LUX-IDENT s.r.o., Tovární 368, 563 01 Lanškroun, Czech Republic  
Tel.: +420 465 352 500, Fax: +420 465 352 501, e-mail: sales@lux-ident.com  
[www.lux-ident.com](http://www.lux-ident.com)



*A range of applications.*

The PCB tag contains a PCB (printed circuit board) antenna. It is suitable for the design of customized tags including special requests for shape (e.g. square shape). The tag can be easily fitted with an additional capacitor, which increases the reading distance of the tag.

#### Features

- Mechanical robustness
- Operating temperature  $-40^{\circ}\text{C}$  to  $85^{\circ}\text{C}$

#### Available chip technologies

Manufacturer frequency	Chip type
<b>NXP</b>	
HF 13.56 MHz	Mifare: Ultralight, Ultralight C, Mini, Classic 1K, Classic 4K, Desfire 4K V.06, Desfire 2K EV1, Desfire 4K EV1, Desfire 8K EV1, Plus S 2K, Plus S 4K, Plus X 2K, Plus X 4K I-Code: SL1, SLI-L, SLI, SLI-S SmartMX, JCOP
<b>Infineon</b>	
HF 13.56 MHz	Mifare SLE66R35 1K, My-D: SRF55V02P, SRF55V10P, NFC SLE66R16P, NFC SLE66R32P
<b>Inside Secure</b>	
HF 13.56 MHz	Picopass 2K, 32K
<b>Legic</b>	
HF 13.56 MHz	Prime MIM256, Prime MIM1024 Advant: ATC128, ATC256, ATC1024, ATC2048, ATC4096

Other ICs are available upon request.