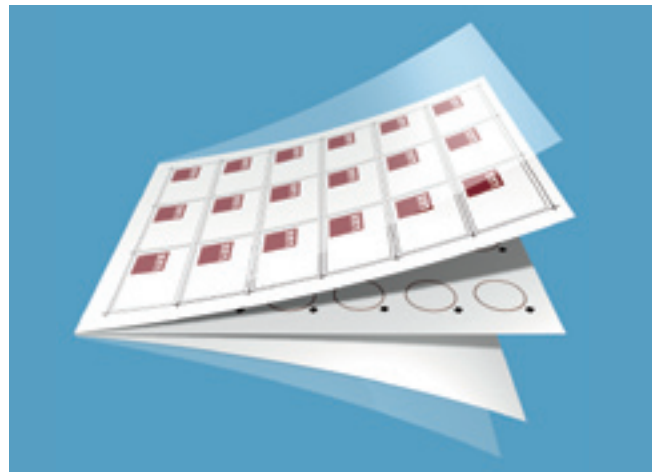




# Prelaminated inlays



LUX-IDent's products

LUX-IDent s.r.o., Tovární 368, 563 01 Lanškroun, Czech Republic  
Tel.: +420 465 352 500, Fax: +420 465 352 501, e-mail: sales@lux-ident.com  
[www.lux-ident.com](http://www.lux-ident.com)



A range of applications.

Prelaminated inlays are suitable for use in production of ISO standard cards. LUX-IDent uses a proprietary manufacturing process to produce its prelaminated inlays. Our prelamms are very robust and boast unequalled torsion/bending characteristics, extreme durability and optimized read/write performance. The inlays have a completely flat finish and bring numerous benefits to card manufacturers.

LUX-IDent's prepressed inlays are designed specifically with the card manufacturer in mind. The inlay is engineered to remove process difficulties whilst yielding an exceptional product. We make the card manufacturer's job easier without sacrificing quality.

Our prelaminated inlay is essentially a semi-finished product, so that the card manufacturer merely needs to collate his printed sheets with the inlay and laminate the "sandwich".

#### Features

- Very reliable and robust plastic package
- High reading distance optimized to each chip
- Materials: PVC, PETG, PC
- Colour: white or transparent
- Possibility of combining two and more different chip technologies in one prelam
- Different sheet formats are available 1×5, 2×5, 3×6, 3×7, 3×8, 3×10, 4×10 up to 640×520 mm, others upon request

#### Available chip technologies

Manufacturer	125 kHz	13.56 MHz
EM Marin	EM4102 EM4305 EM4450	
NXP	Hitag 1, 2, S	Mifare: Ultralight, Ultralight C, Mini, Classic, Desfire, Plus I-Code: SL1, SLI, SLI-S, SLI-L SmartMX, JCOP
Infineon		Mifare: NRG My-D
Atmel	ATA5575 ATA5577 Q5	
Inside Contactless		Picopass 2K, 32K
Legic		Prime: MIM256, MIM1024 Advant: ATC128, ATC256, ATC1024, ATC2048, ATC4096

Other ICs are available upon request.

