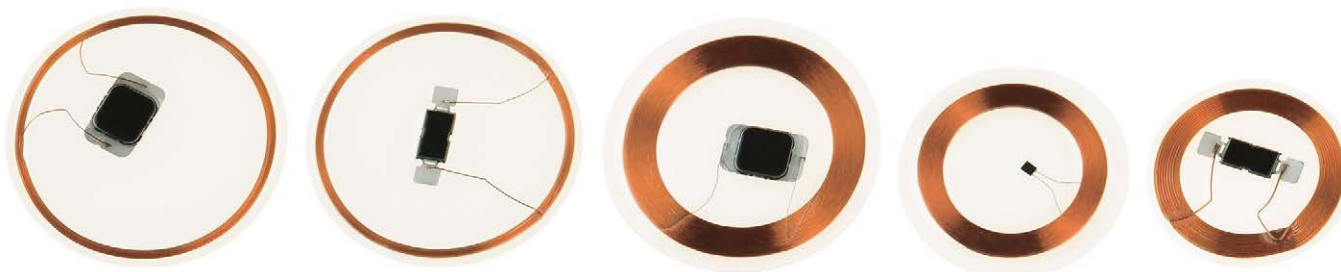


# Disc tags



**LUX-Ident s.r.o.** – headquarters [production, sales, R & D]  
Tovární 368, 563 01 Lanškroun, Czech Republic  
Tel.: +420 465 352 500  
e-mail: [info@lux-ident.com](mailto:info@lux-ident.com)  
[www.lux-ident.com](http://www.lux-ident.com)

**LUX-Ident Germany GmbH** – branch office [sales, R & D]  
Rudolf-Diesel-Ring 21, 82054 Sauerlach, Germany  
Tel.: +49 8104 805 502  
e-mail: [smart-inlays@lux-ident.com](mailto:smart-inlays@lux-ident.com)  
[www.lux-ident.com](http://www.lux-ident.com)



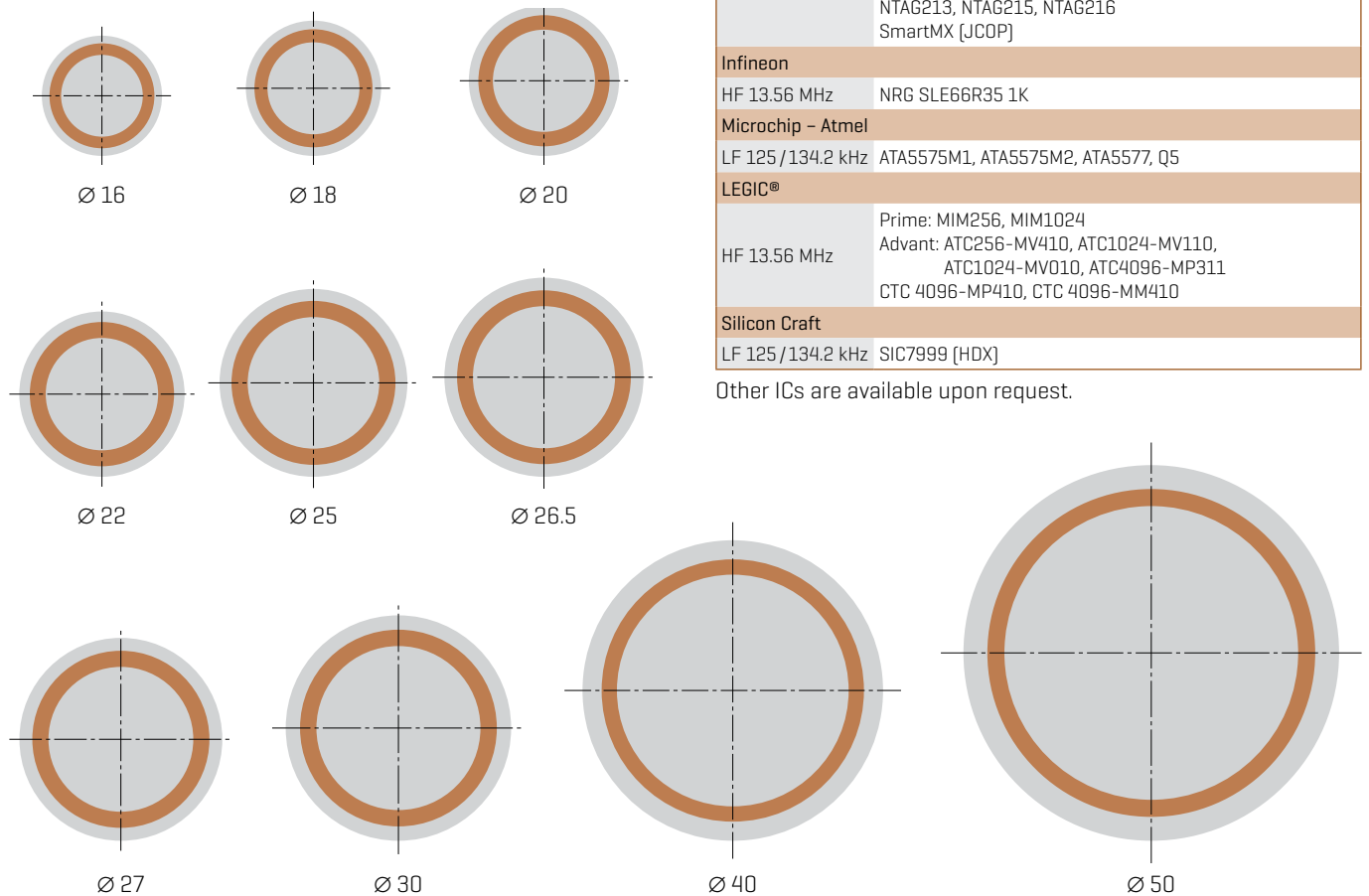
A range of applications.

**Disc tags are transponders laminated between very thin foils. The foils protect the transponders from dust, dirt and humidity.**

Disc tags are suitable for further assembling and labelling as they are easy to handle. Disc transponders are also available with adhesive foil on one side or with a central hole for easier tack. Protecting foils can be made from different materials like PET, PETG, PVC or PC. For instance, PET material is appropriate for most pharmaceutical, medical and food applications.

**DIMENSIONS**

[outer diameters, mm]



Other dimensions upon request.

**AVAILABLE CHIP TECHNOLOGIES**

Manufacturer frequency	Chip type
<b>EM Microelectronic</b>	
LF 125 /134.2 kHz	EM4102, EM4200, EM4305, EM4450
<b>NXP</b>	
LF 125 /134.2 kHz	Hitag® 1, Hitag® 2, Hitag® S 256bit, Hitag® S 2048bit
HF 13.56 MHz	MIFARE Ultralight® C, MIFARE Ultralight® EV1, MIFARE Classic® 1K EV1, MIFARE Classic® 4K EV1, MIFARE® DESFire® 256B EV1, MIFARE® DESFire® 2K EV1/EV2, MIFARE® DESFire® 4K EV1/EV2, MIFARE® DESFire® 8K EV1/EV2, MIFARE Plus® SE, MIFARE Plus® S 2K, MIFARE Plus® S 4K, MIFARE Plus® X 2K, MIFARE Plus® X 4K, MIFARE Plus® EV1 2K, MIFARE Plus® EV1 4K, I-Code® SLIX, NTAG213, NTAG215, NTAG216, SmartMX [JCOP]
<b>Infineon</b>	
HF 13.56 MHz	NRG SLE66R35 1K
<b>Microchip - Atmel</b>	
LF 125 /134.2 kHz	ATA5575M1, ATA5575M2, ATA5577, Q5
<b>LEGIC®</b>	
HF 13.56 MHz	Prime: MIM256, MIM1024 Advant: ATC256-MV410, ATC1024-MV110, ATC1024-MV010, ATC4096-MP311, CTC 4096-MP410, CTC 4096-MM410
<b>Silicon Craft</b>	
LF 125 /134.2 kHz	SIC7999 [HDX]

Other ICs are available upon request.