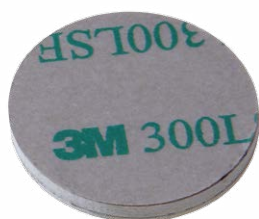




Metal tags



LUX-Ident s.r.o. – headquarters [production, sales, R & D]
Tovární 368, 563 01 Lanškroun, Czech Republic
Tel.: +420 465 352 500
e-mail: info@lux-ident.com
www.lux-ident.com

LUX-Ident Germany GmbH – branch office [sales, R & D]
Rudolf-Diesel-Ring 21, 82054 Sauerlach, Germany
Tel.: +49 8104 805 502
e-mail: smart-inlays@lux-ident.com
www.lux-ident.com



A range of applications.

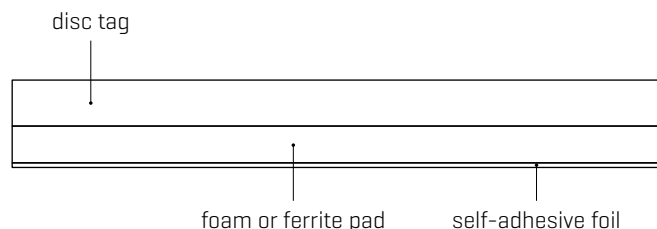
Metal tags are special RFID tags suitable for use in metallic environments.

In general, metal creates problems for the life of RFID applications, which is why we offer special metal tags that resolve this issue. Metal tags are customized products – special tests are carried out for each and every one of the applications specified by our customers, with regard to the environment, the size of the tag, reader antenna and specific chip technology. We offer our customers samples for initial testing.

FEATURES

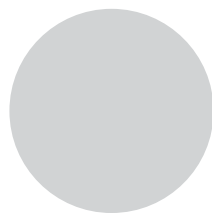
- Material: PVC, PETG, PC
- Spacers: foam or ferrite
- Standard diameters: 27, 30 and 50 mm
- Possibility of an adhesive layer for easy attachment
- Suitable for indoor and outdoor applications
- Can be personalized by full colour printing

METAL TAG CONSTRUCTION

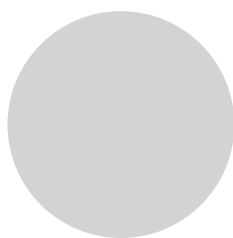


STANDARD DIAMETERS

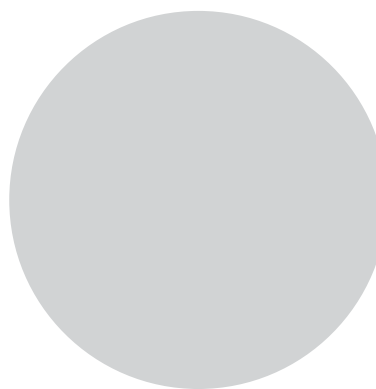
[mm]



Ø 27



Ø 30



Ø 50

AVAILABLE CHIP TECHNOLOGIES

Manufacturer frequency	Chip type
EM Microelectronic	
LF 125 / 134.2 kHz	EM4102, EM4200, EM4305, EM4450
NXP	
LF 125 / 134.2 kHz	Hitag® 1, Hitag® 2, Hitag® S 256bit, Hitag® S 2048bit
HF 13.56 MHz	MIFARE Ultralight® C, MIFARE Ultralight® EV1, MIFARE Classic® 1K EV1, MIFARE Classic® 4K EV1, MIFARE® DESFire® 256B EV1, MIFARE® DESFire® 2K EV1/EV2, MIFARE® DESFire® 4K EV1/EV2, MIFARE® DESFire® 8K EV1/EV2, MIFARE Plus® SE, MIFARE Plus® S 2K, MIFARE Plus® S 4K, MIFARE Plus® X 2K, MIFARE Plus® X 4K, MIFARE Plus® EV1 2K, MIFARE Plus® EV1 4K I-Code® SLIX NTAG213, NTAG215, NTAG216 SmartMX (JCOPI)
Infineon	
HF 13.56 MHz	NRG SLE66R35 1K
Microchip – Atmel	
LF 125 / 134.2 kHz	ATA5575M1, ATA5575M2, ATA5577, Q5
LEGIC®	
HF 13.56 MHz	Prime: MIM256, MIM1024 Advant: ATC256-MV410, ATC1024-MV110, ATC1024-MV010, ATC4096-MP311 CTC 4096-MP410, CTC 4096-MM410
Silicon Craft	
LF 125 / 134.2 kHz	SIC7999 (HDX)

Other ICs are available upon request.